

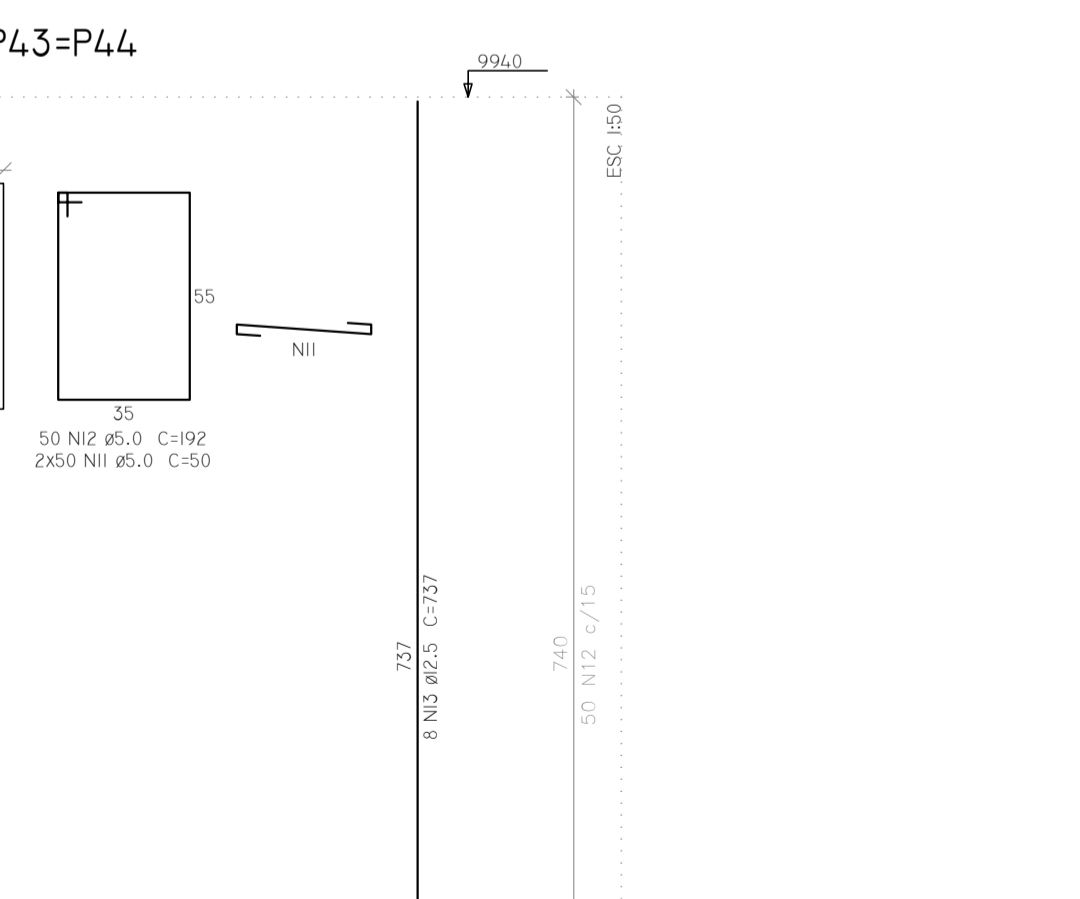
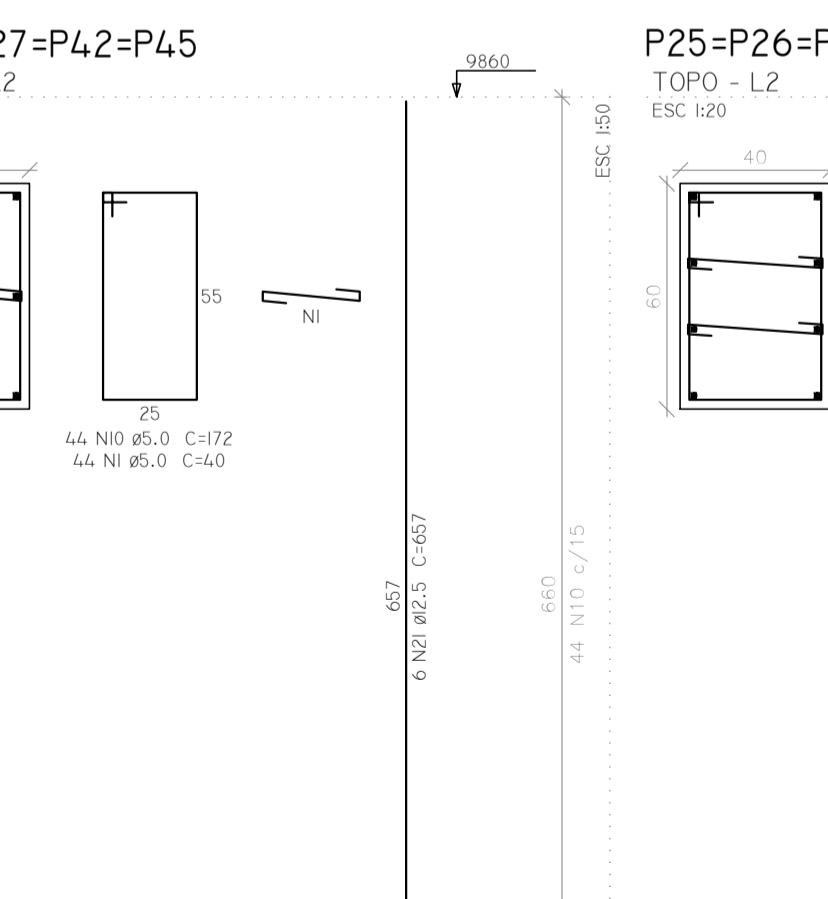
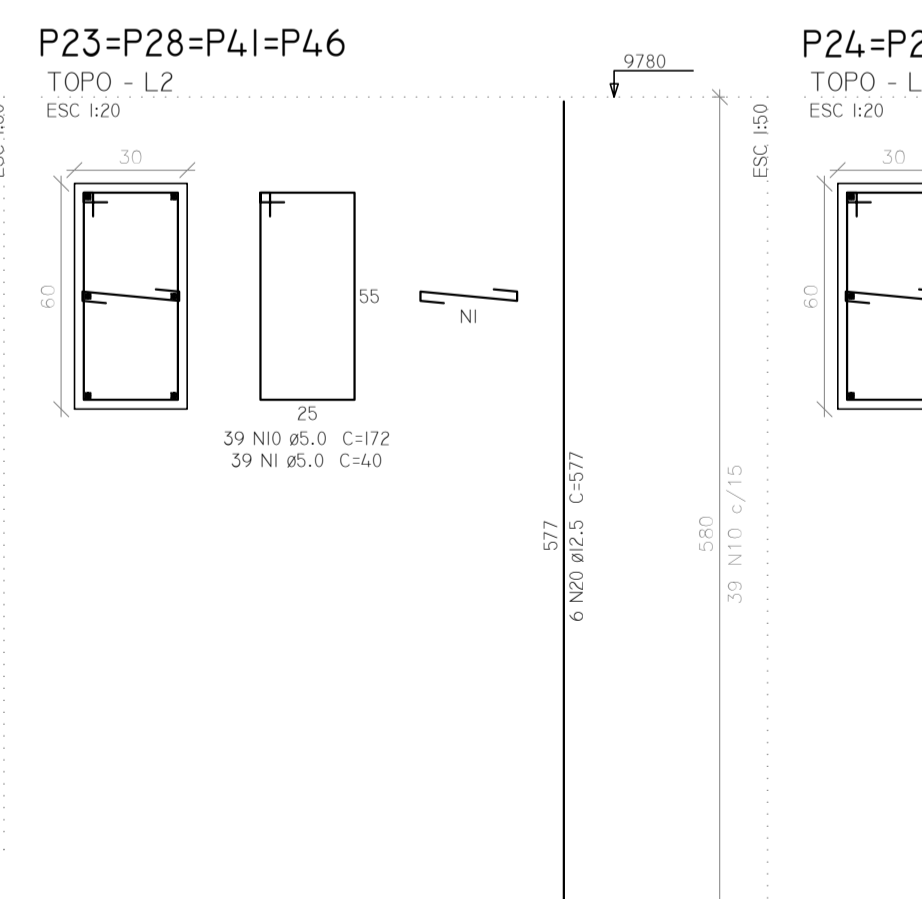
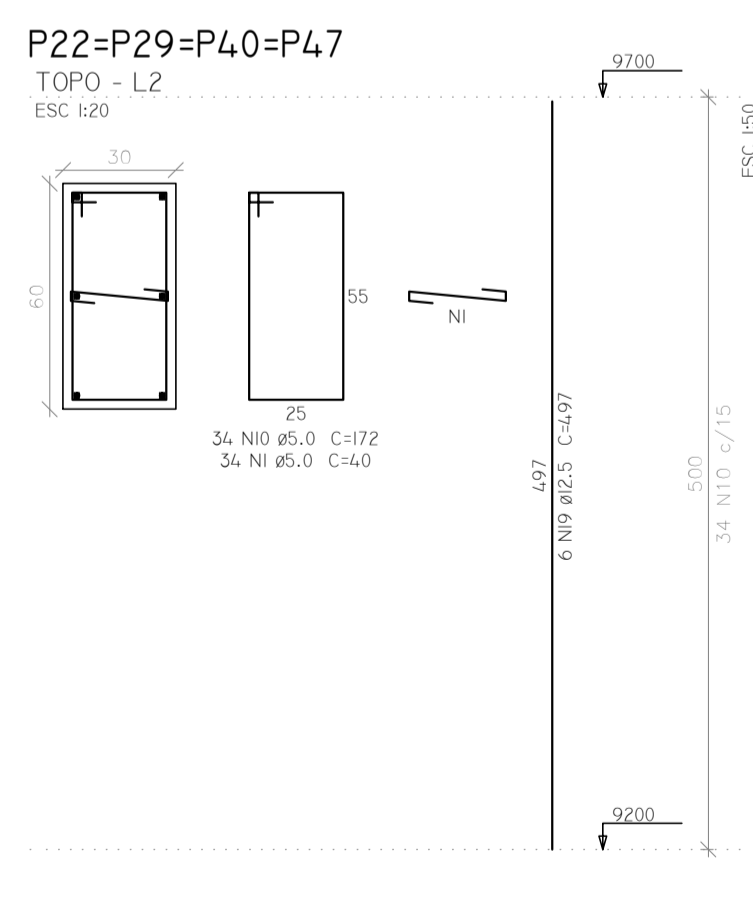
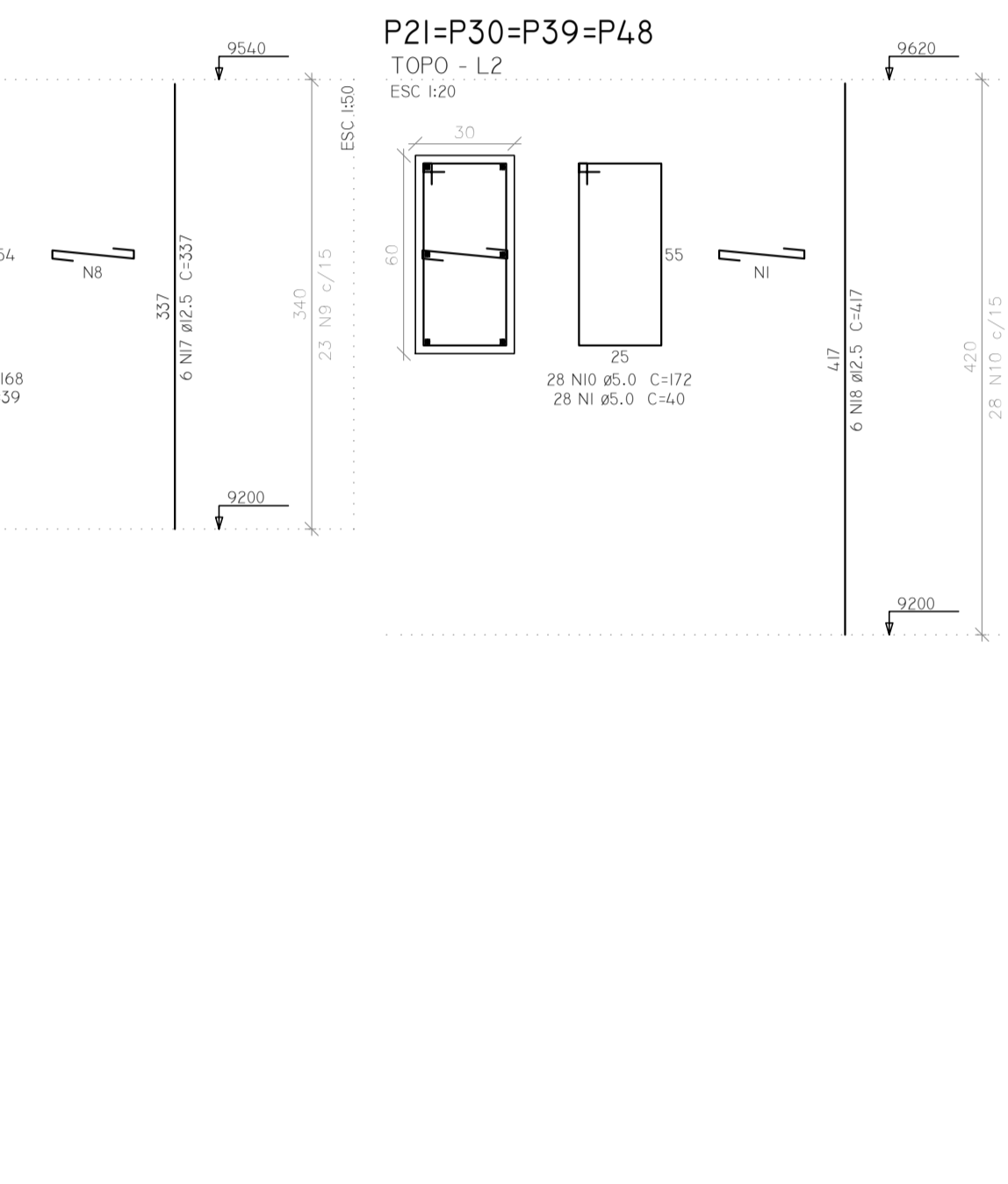
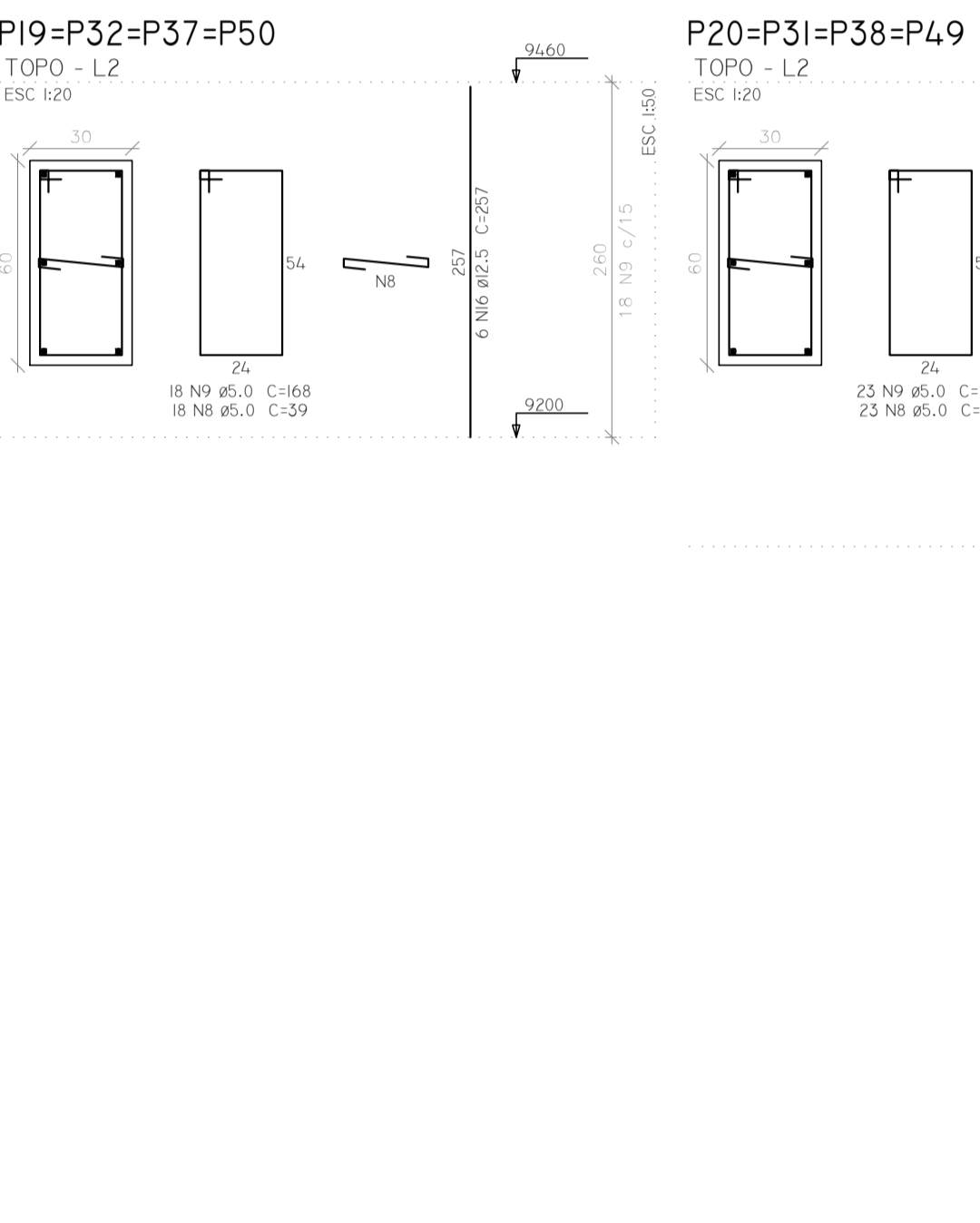
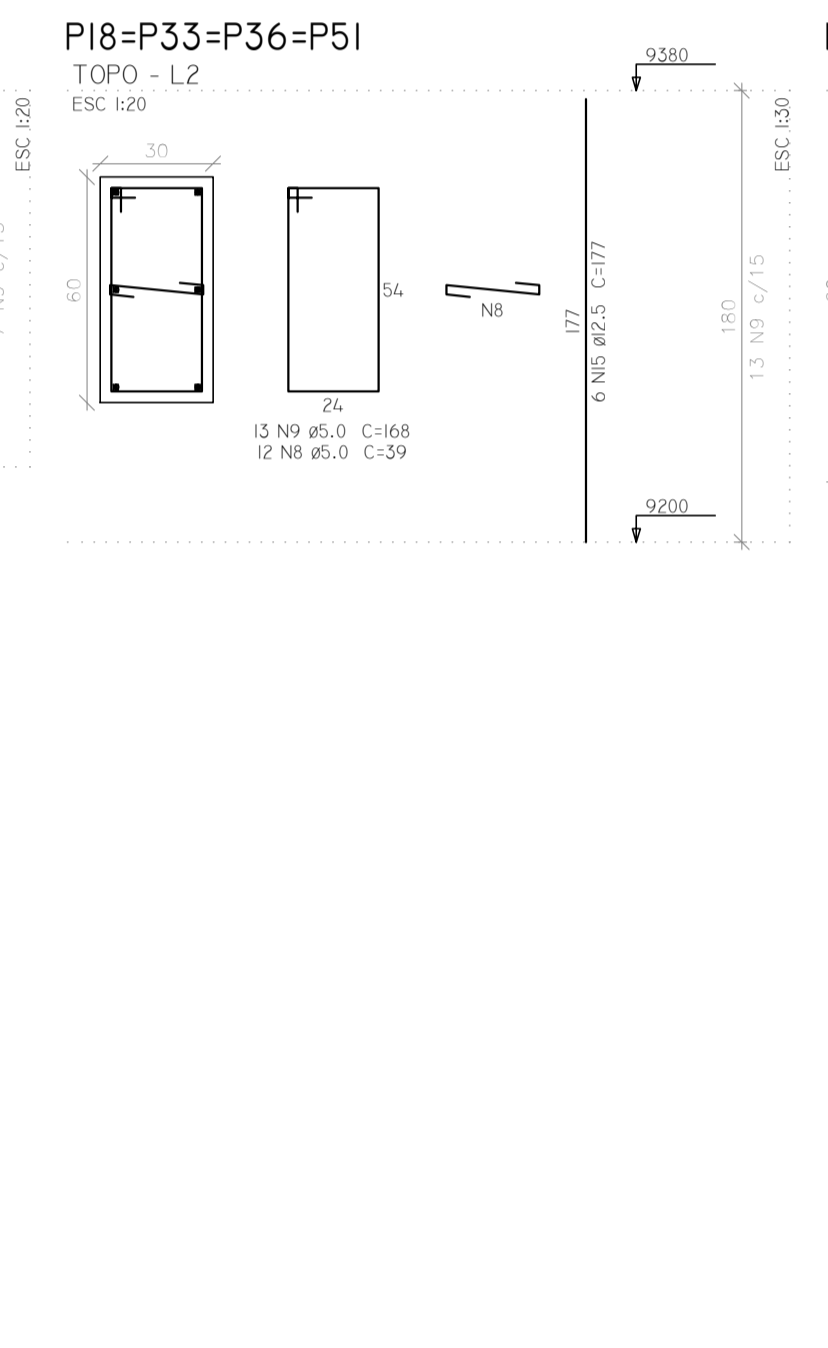
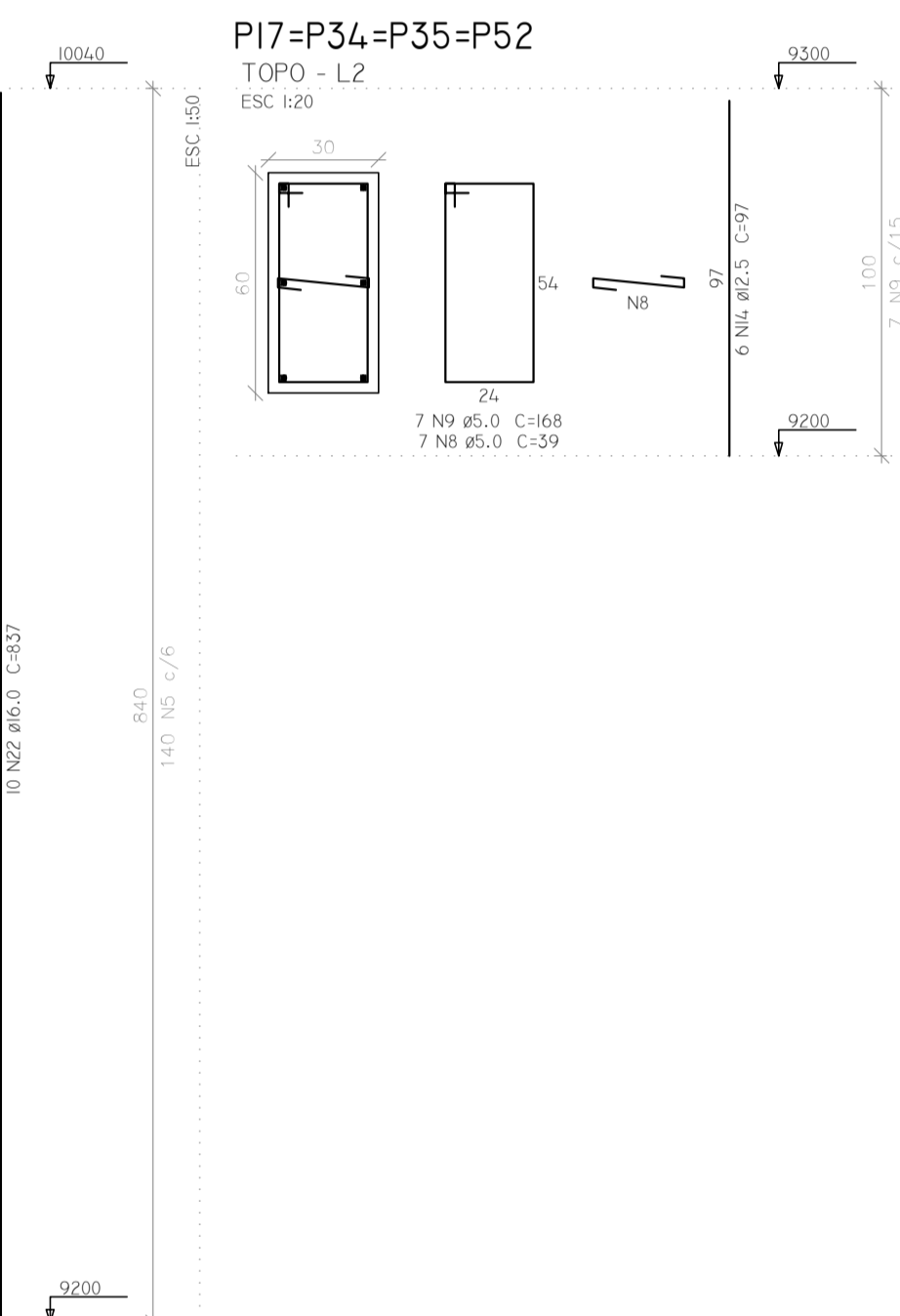
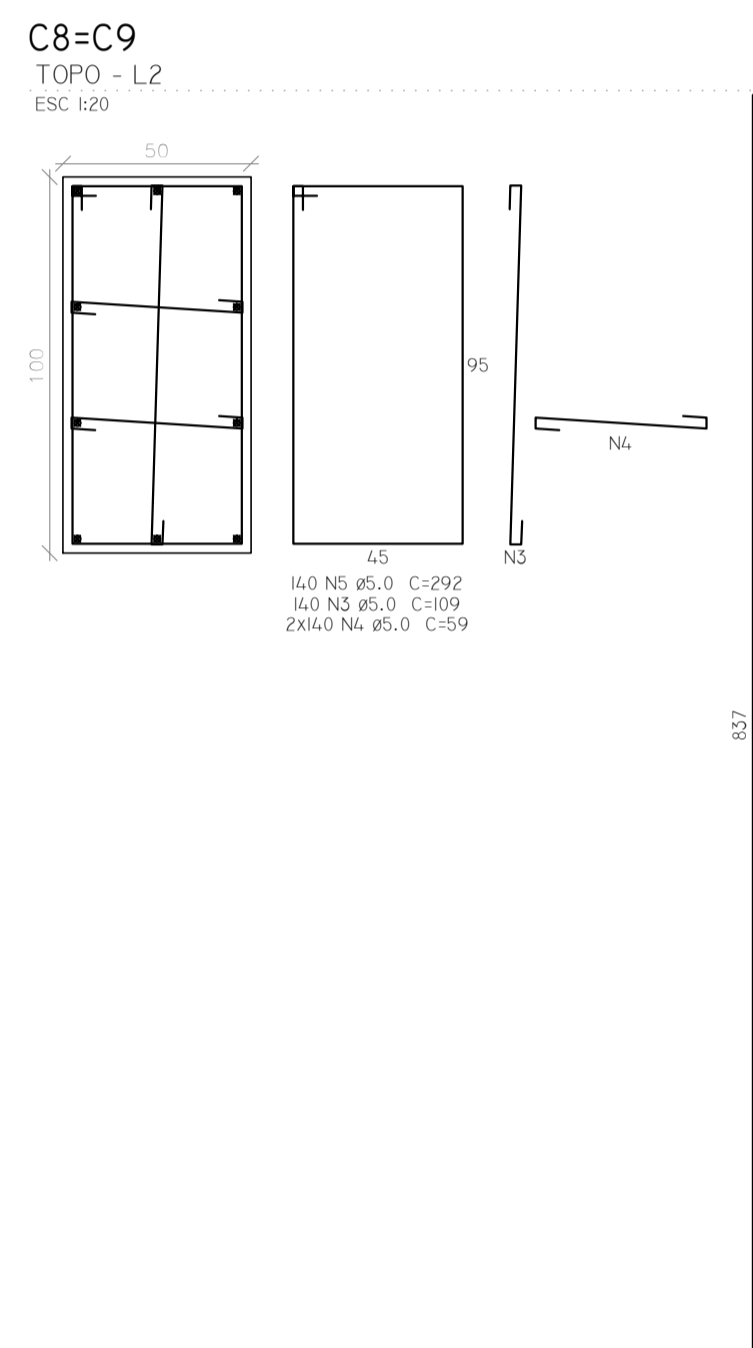
RELAÇÃO DO AÇO

ACO	N	DIAM (mm)	QUANT (BARRAS)	UNIT (cm)	C.TOTAL (cm)
CA60	1	5.0	880	4.0	35200
CA60	2	5.0	100	252	25200
CA60	3	5.0	5320	109	579880
CA60	4	5.0	2608	59	152972
CA60	5	5.0	1504	292	380768
CA60	6	5.0	1776	69	122544
CA60	7	5.0	592	312	184704
CA60	8	5.0	240	59	9360
CA60	9	5.0	244	168	40992
CA60	10	5.0	580	172	99760
CA60	11	5.0	400	50	20000
CA60	12	5.0	200	192	38400
CA50	13	12.5	52	737	38324
CA50	14	12.5	24	97	2328
CA50	15	12.5	24	177	4248
CA50	16	12.5	24	257	6388
CA50	17	12.5	24	337	8388
CA50	18	12.5	24	417	10388
CA50	19	12.5	24	497	12388
CA50	20	12.5	24	577	14388
CA50	21	12.5	24	657	16388
CA50	22	16.0	48	837	40176
CA50	23	16.0	180	737	132660

RESUMO DO AÇO

ACO	DIAM (mm)	C.TOTAL (kg)	PESO + 10 % (kg)
CA50	12.5	1107.1	1173.1
CA60	16.0	1728.4	3000.7
CA60	5.0	16906.8	2866.5
PESO TOTAL (kg)			
CA50		4173.9	
CA60		2866.5	

VOLUME DE CONCRETO (C-50) = 90,19 m³  
ÁREA DE FORMA = 645,28 m²



ESTRUTURAS DE CONCRETO  
ESTRUTURAS METÁLICAS  
FUNDAÇÕES  
PROJETOS EXECUTIVOS  
EXECUÇÃO DE OBRAS

**Premolfort**.ind  
pré-moldados

Proprietário: Prefeitura Municipal de Dois Vizinhos - PR  
Obra: VIADUTO  
Local da Obra: Avenida Rio Grande do Sul com Rua Mario de Barros;

Assinatura Proprietário: \_\_\_\_\_

Conteúdo: Nivel TOPO  
DETALHAMENTOS

Finalidade: VIADUTO

Área: m²

Resp. Técnico: PEDRO LEIRIAS JR  
CREA-PR 50.390/D

Desenvolvimento: Carla Fernanda de Quadros

Projeto: 12

Desenho: Carla

25

Assinatura Responsável Técnico: \_\_\_\_\_

Data: mai/15

Estado: INDICADA

Arquivo: Project.dwg

Folha: 01

PROJETO DE ESTRUTURAS