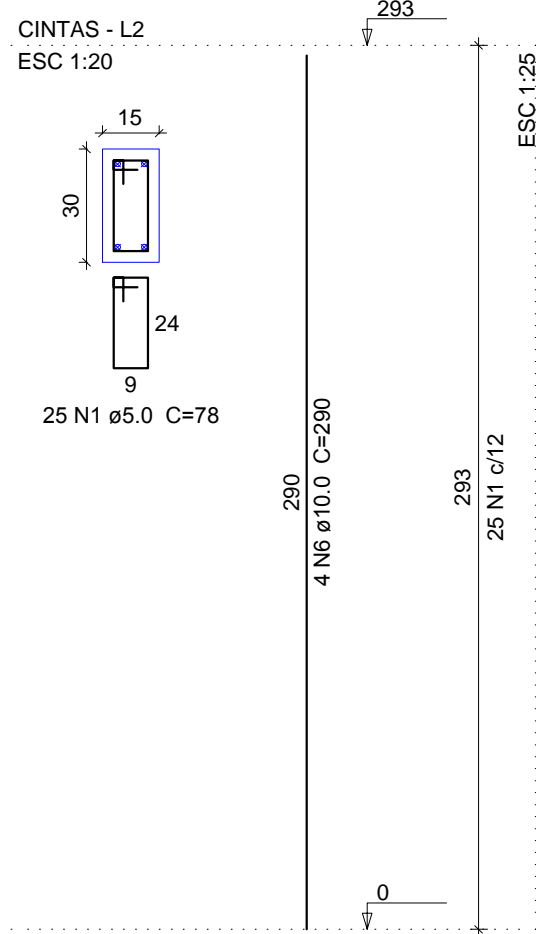
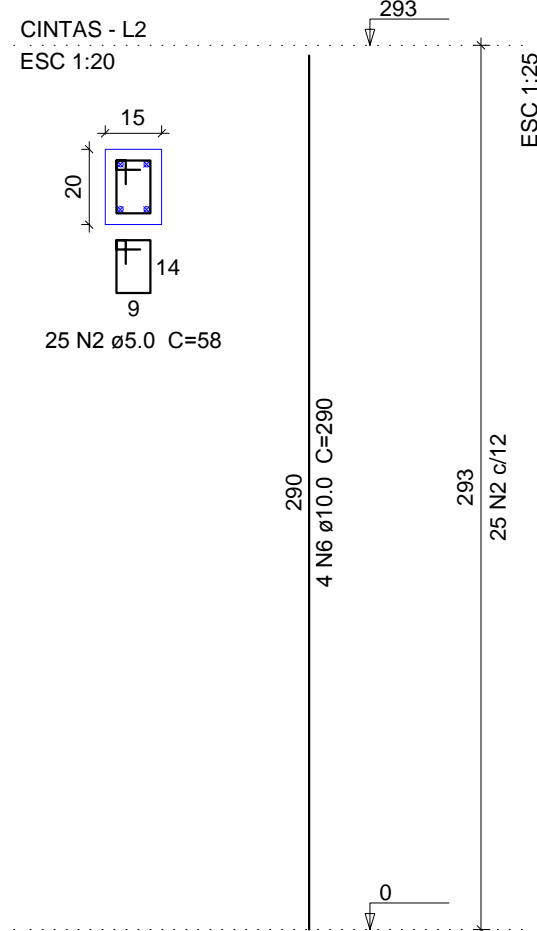


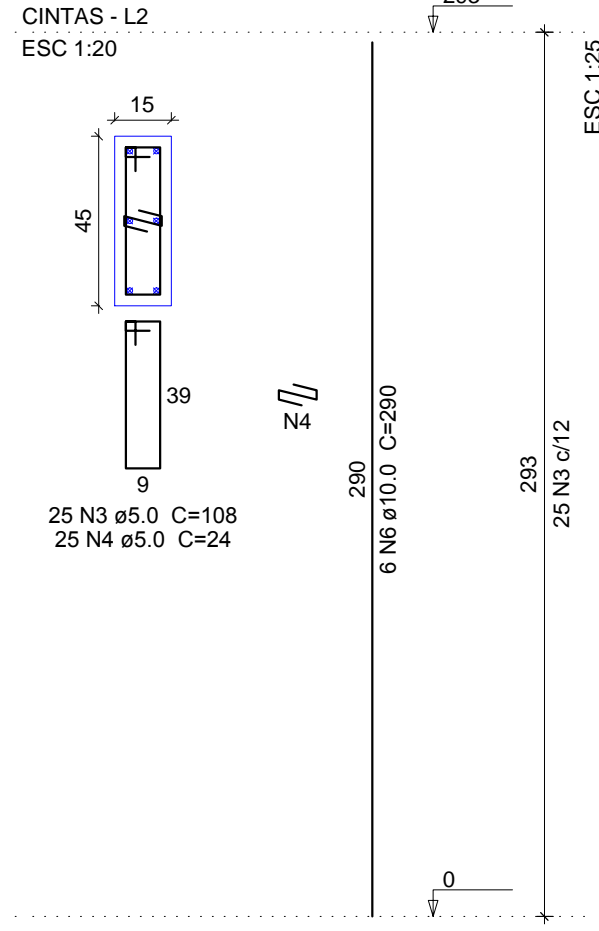
P1=P2=P3=P4=P5=P6=P7=P8=  
=P9=P16=P17=P18=P19=P20=  
=P23



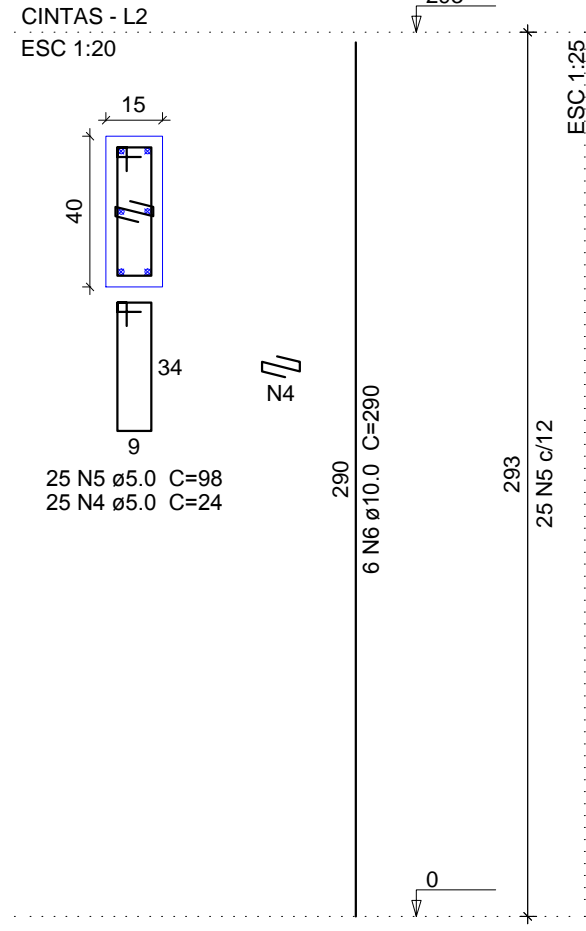
P10=P11=P13=P14=P21=P22



P12



P15



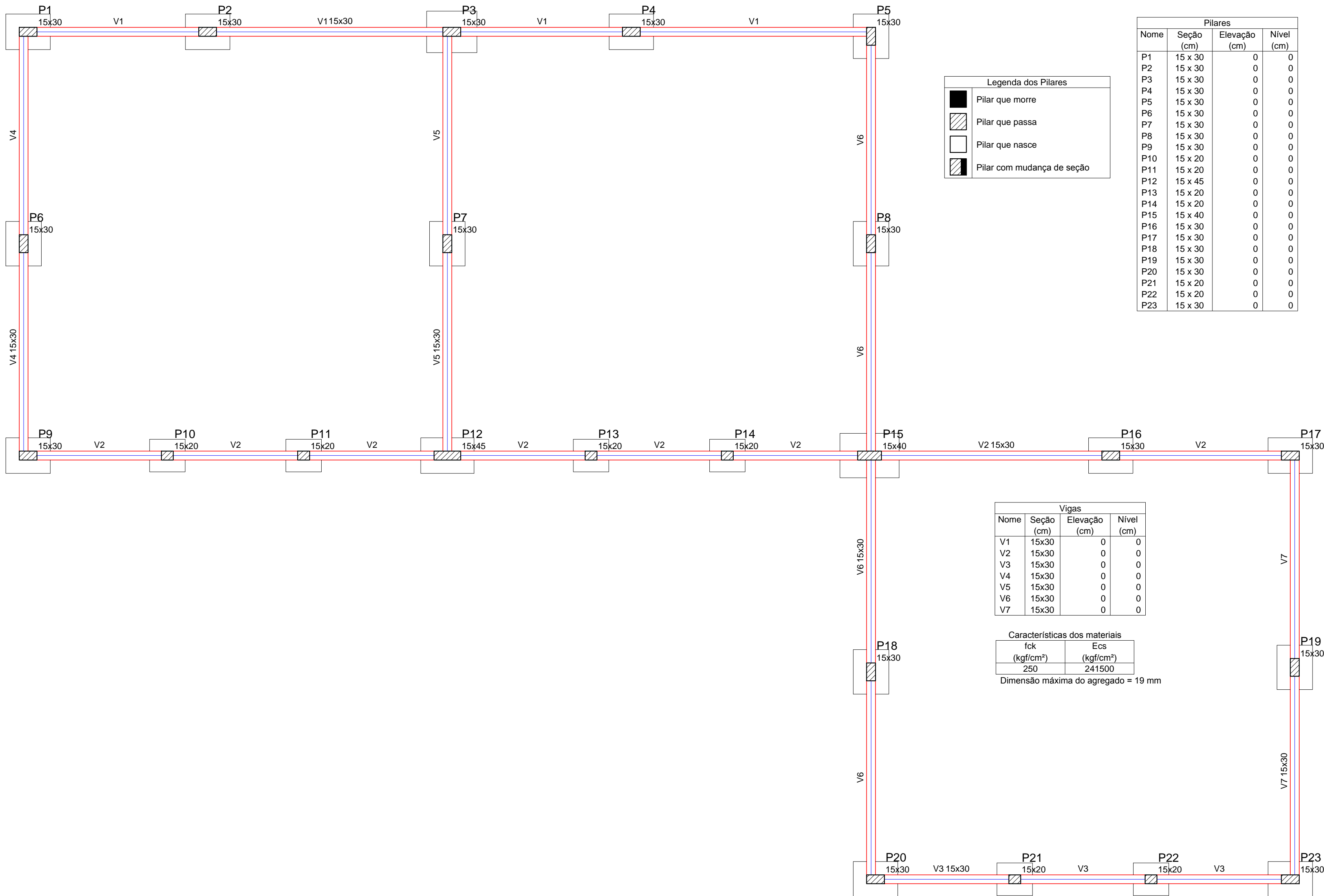
#### Relação do aço

15xP1 P15		6xP10		P12	
AÇO	N	DIAM (mm)	QUANT	C.UNIT (cm)	C.TOTAL (cm)
CA60	1	5.0	375	78	29250
	2	5.0	150	58	8700
	3	5.0	25	108	2700
	4	5.0	50	24	1200
	5	5.0	25	98	2450
CA50	6	10.0	96	290	27840

#### Resumo do aço

AÇO	DIAM (mm)	C.TOTAL (m)	PESO + 10 % (kg)
CA50	10.0	278.4	188.8
CA60	5.0	443	75.1
PESO TOTAL (kg)			
CA50	188.8		
CA60	75.1		

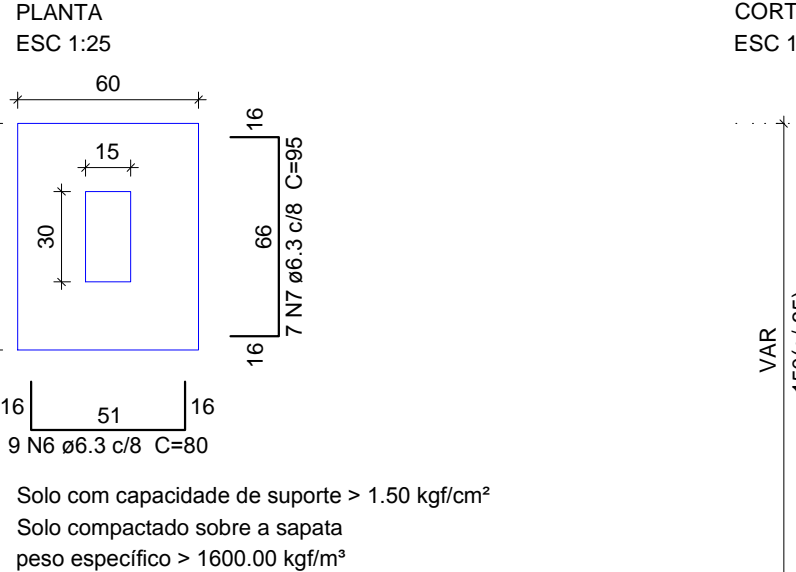
Volume de concreto (C-25) = 2.88 m³  
Área de forma = 58.6 m²



## Forma do pavimento FUNDAÇÃO

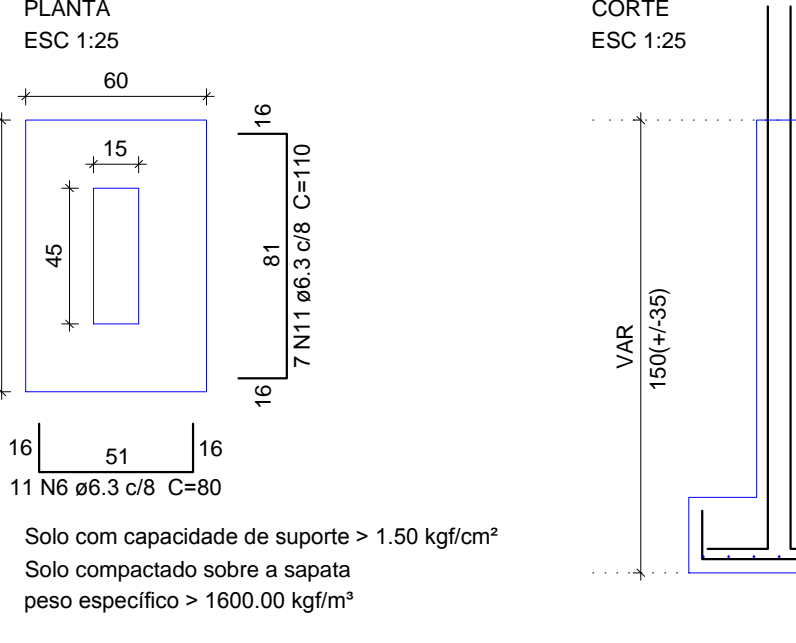
escala 1:50

S1=S2=S4=S5=S6=S7=S8=S9=S16=S17=S18=S19  
=S20=S23



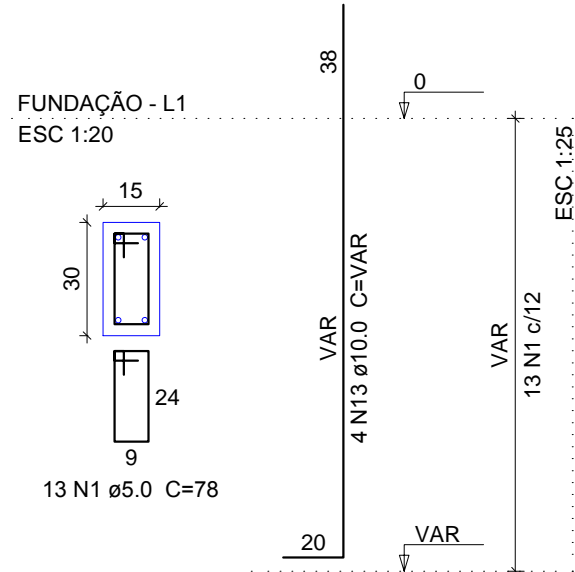
Solo com capacidade de suporte > 1.50 kgf/cm²  
Solo compactado sobre a sapata  
peso específico > 1600.00 kgf/m³

S12

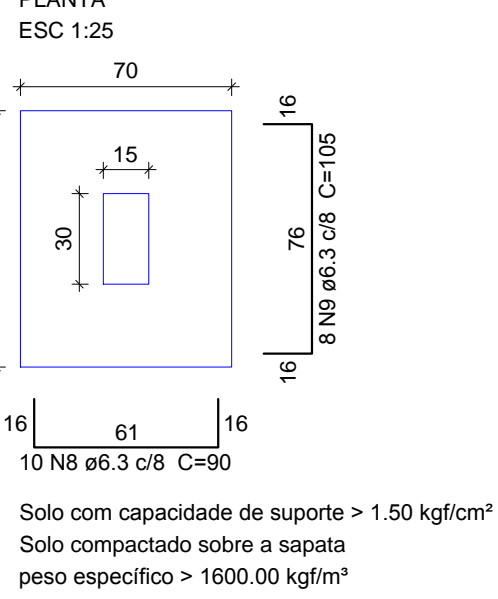


Solo com capacidade de suporte > 1.50 kgf/cm²  
Solo compactado sobre a sapata  
peso específico > 1600.00 kgf/m³

P1=P2=P4=P5=P6=P7=P8=P9=  
=P16=P17=P18=P19=P20=P23

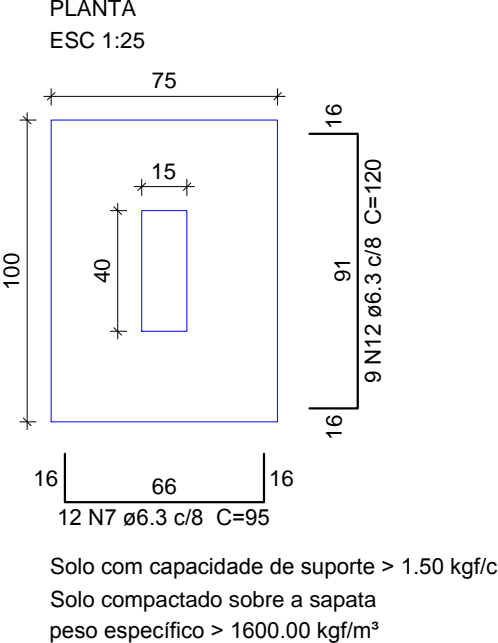


S3

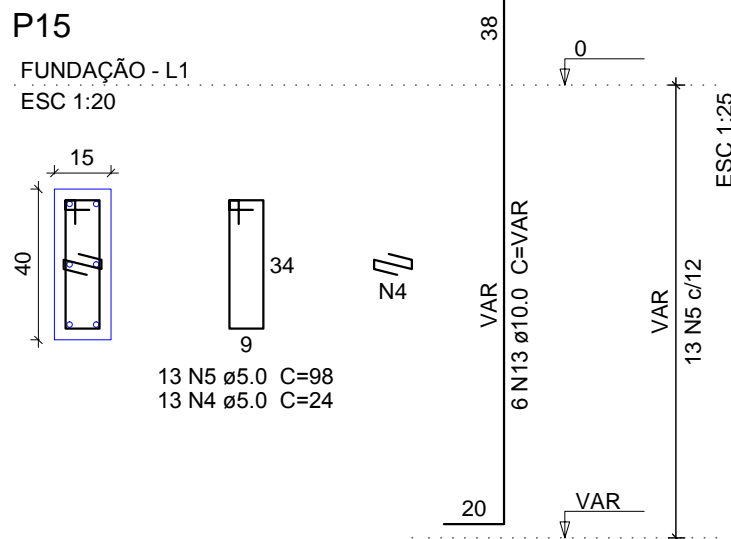
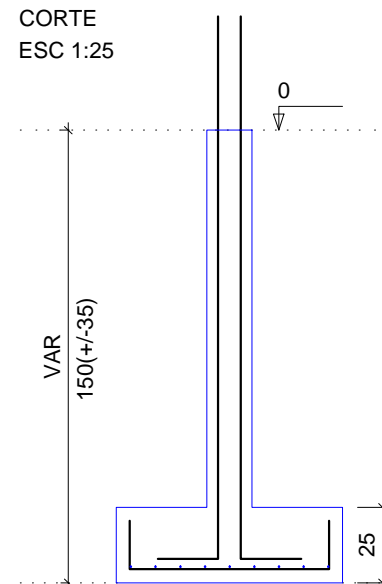
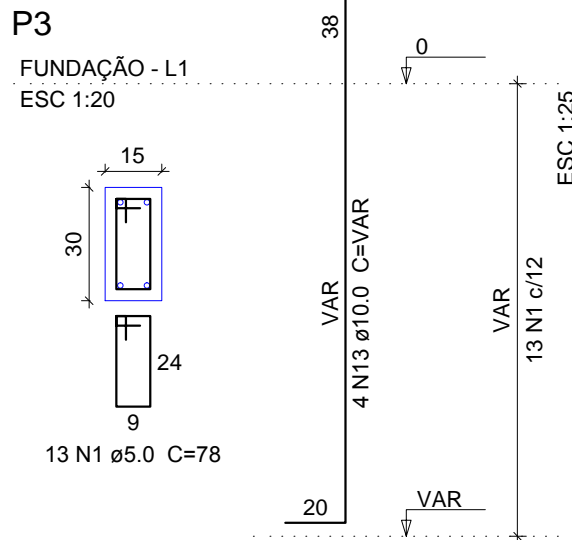
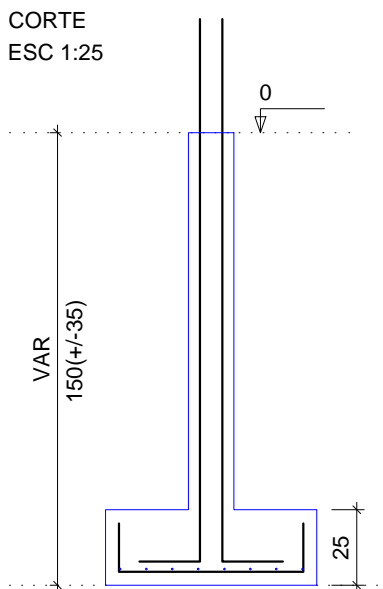


Solo com capacidade de suporte > 1.50 kgf/cm²  
Solo compactado sobre a sapata  
peso específico > 1600.00 kgf/m³

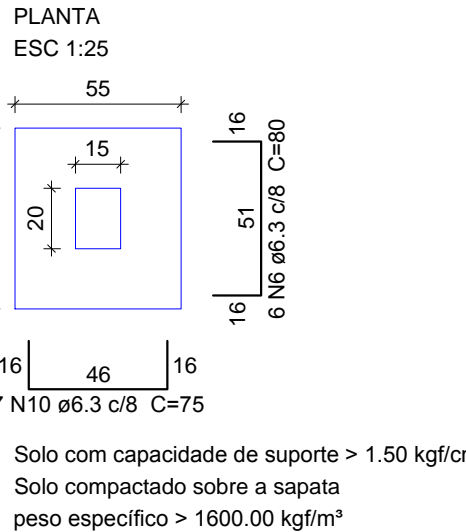
S15



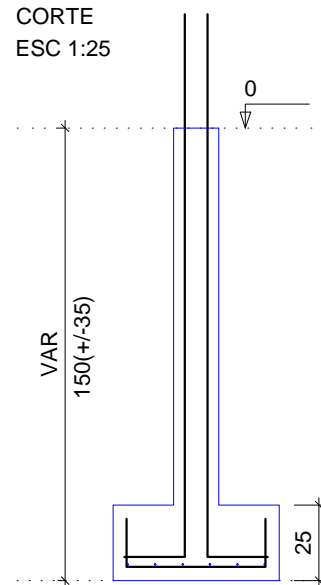
Solo com capacidade de suporte > 1.50 kgf/cm²  
Solo compactado sobre a sapata  
peso específico > 1600.00 kgf/m³



S10=S11=S13=S14=S21=S22



Solo com capacidade de suporte > 1.50 kgf/cm²  
Solo compactado sobre a sapata  
peso específico > 1600.00 kgf/m³



#### Relação do aço

S3	6xS10	S12			
S15	14xS16				
AÇO	N	DIAM (mm)	QUANT	C.UNIT (cm)	C.TOTAL (cm)
CA60	1	5.0	195	78	15210
	2	5.0	78	58	4524
	3	5.0	13	108	1404
	4	5.0	26	24	624
	5	5.0	13	98	1274
CA50	6	6.3	173	80	13840
	7	6.3	110	95	10450
	8	6.3	10	90	900
	9	6.3	8	105	840
	10	6.3	42	75	3150
	11	6.3	7	110	770
	12	6.3	9	120	1080
	13	10.0	96	VAR	VAR

#### Resumo do aço

AÇO	DIAM (mm)	C.TOTAL (m)	PESO + 10 % (kg)
CA50	6.3	310.3	83.5
CA60	5.0	230.4	39.1
PESO TOTAL (kg)			
CA50	149.25		
CA60	39.1		

Volume de concreto (C-25) = 4.01 m³  
Área de forma = 45.3 m²

P10=P11=P13=P14=P21=P22

