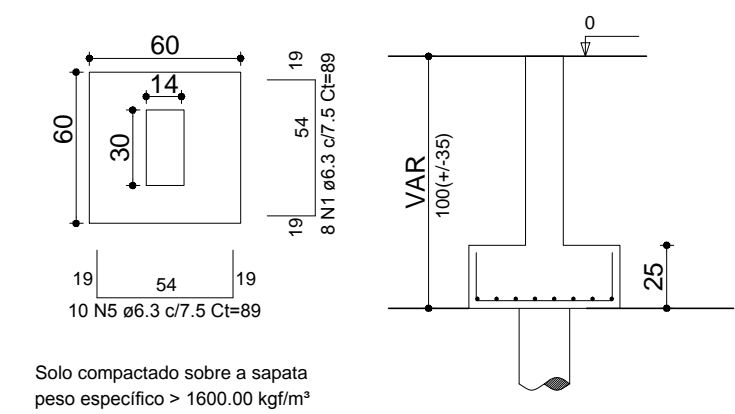


S1=S2=S3=S4=S6=S7=S9=S10=S11=S12=S14=S15
 Planta ESC 1:30 Corte ESC 1:30

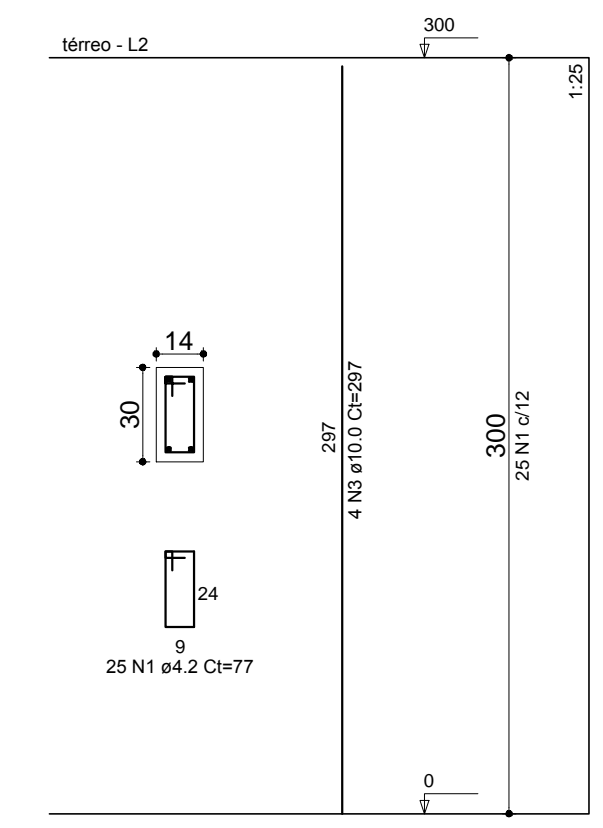


Solo compactado sobre a sapata
 peso específico > 1600.00 kg/m³

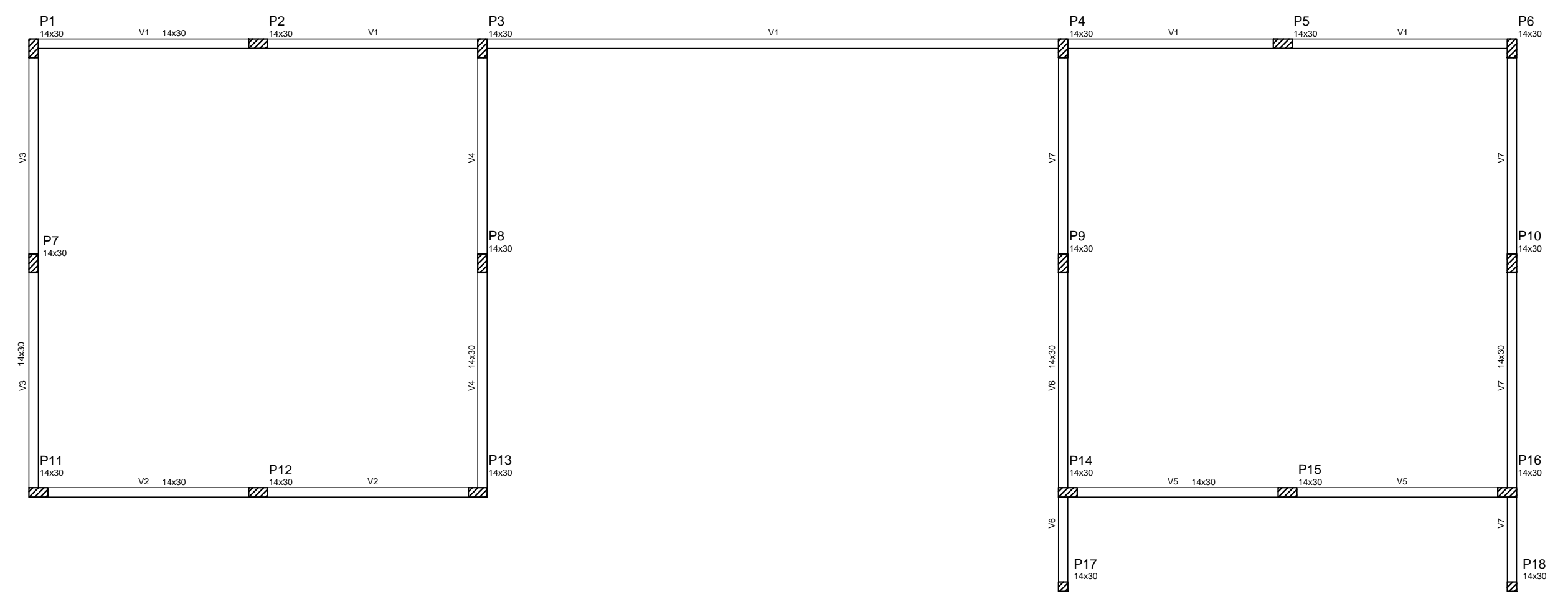
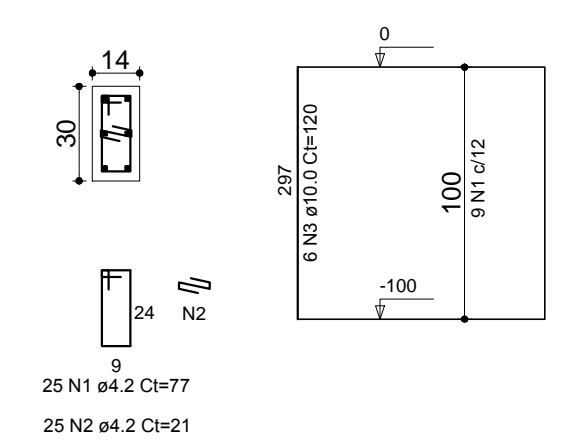
NOTA: executar broca D=20cm, prof. 5,00m, 4ø10.0 long. e estribos 10ø4.2mm, sob a fundação.

CONCRETO FCK 30 MPA

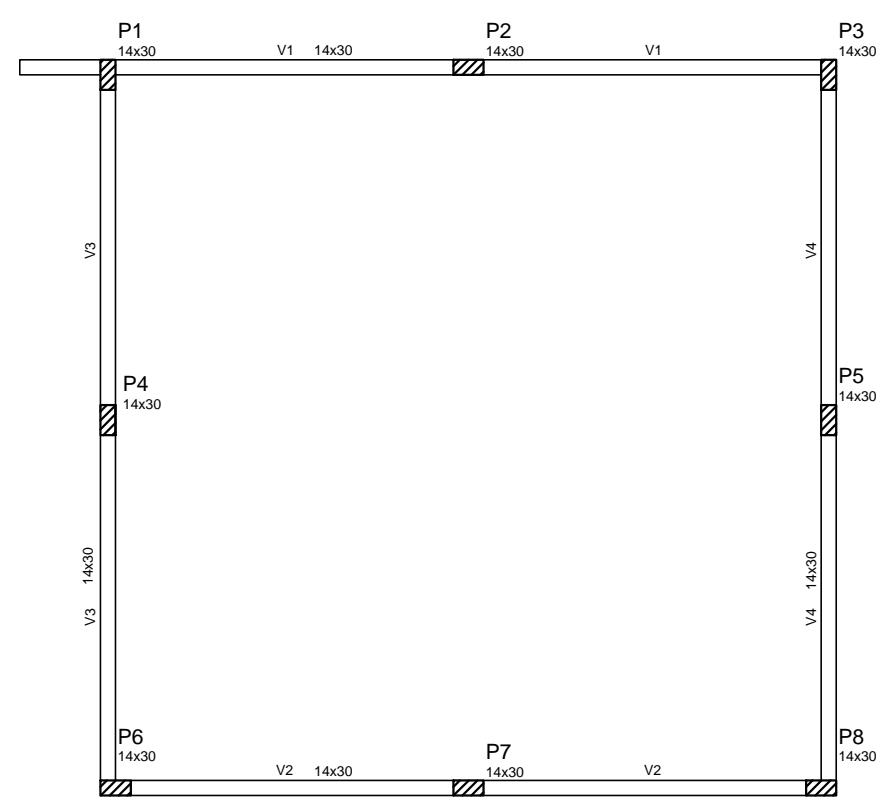
PILARES



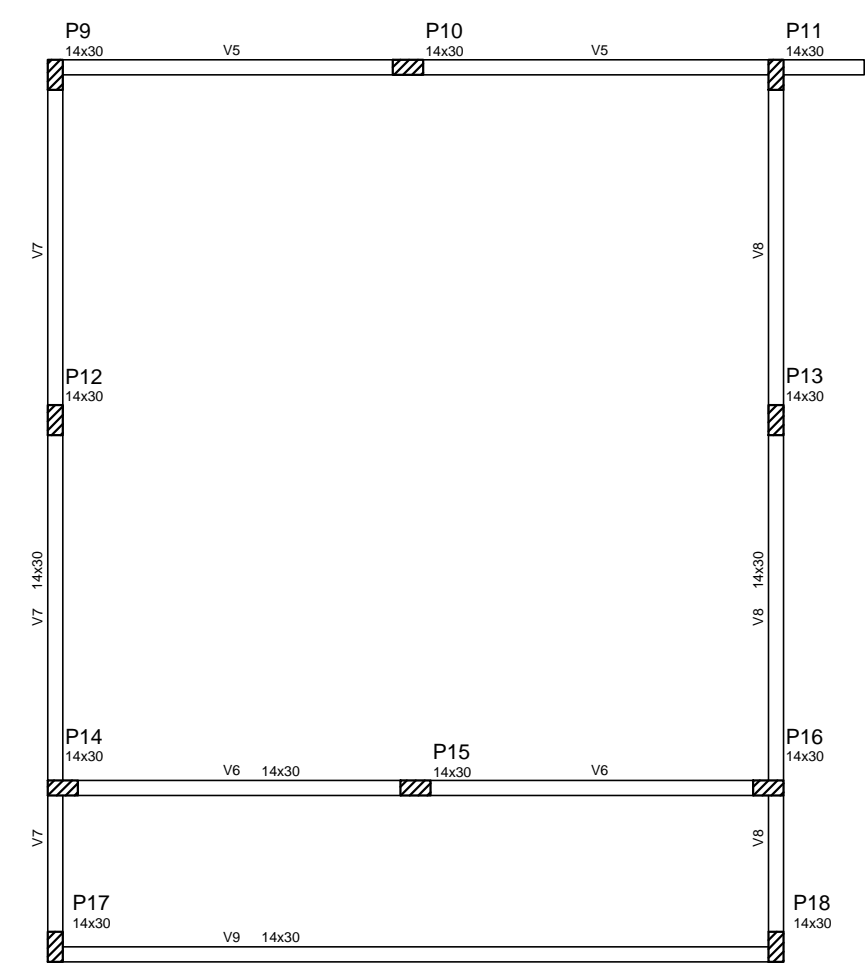
ARRANQUE FUNDAÇÃO



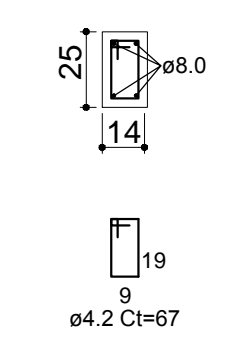
VIGA BALDRAME
 escala 1:75



VIGA SUPERIOR
 escala 1:75

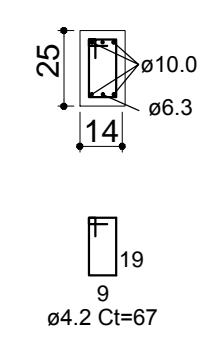


VIGA V1, V2,
 V4,V5, V6



ESC 1:25

VIGA V3



PREFEITURA MUNICIPAL

Administração 2017 / 2020

ADMINISTRAÇÃO	RESP. TÉCNICO	BRANCHA	01 / 01	
OBRA		ÁREA	ESTRUTURAL	
ESPECIFICAÇÕES		DATA	JANEIRO / 2018	
LOCAL		ESCALA	LOTE	QUADRA
RUA SÃO LUIS SCROSOPPI, 94 - SANTA LUZIA		INDICADA		A.I. IV
MUNICÍPIO	ESTADO	ARQUIVO		
DOIS VIZINHOS	PARANÁ			