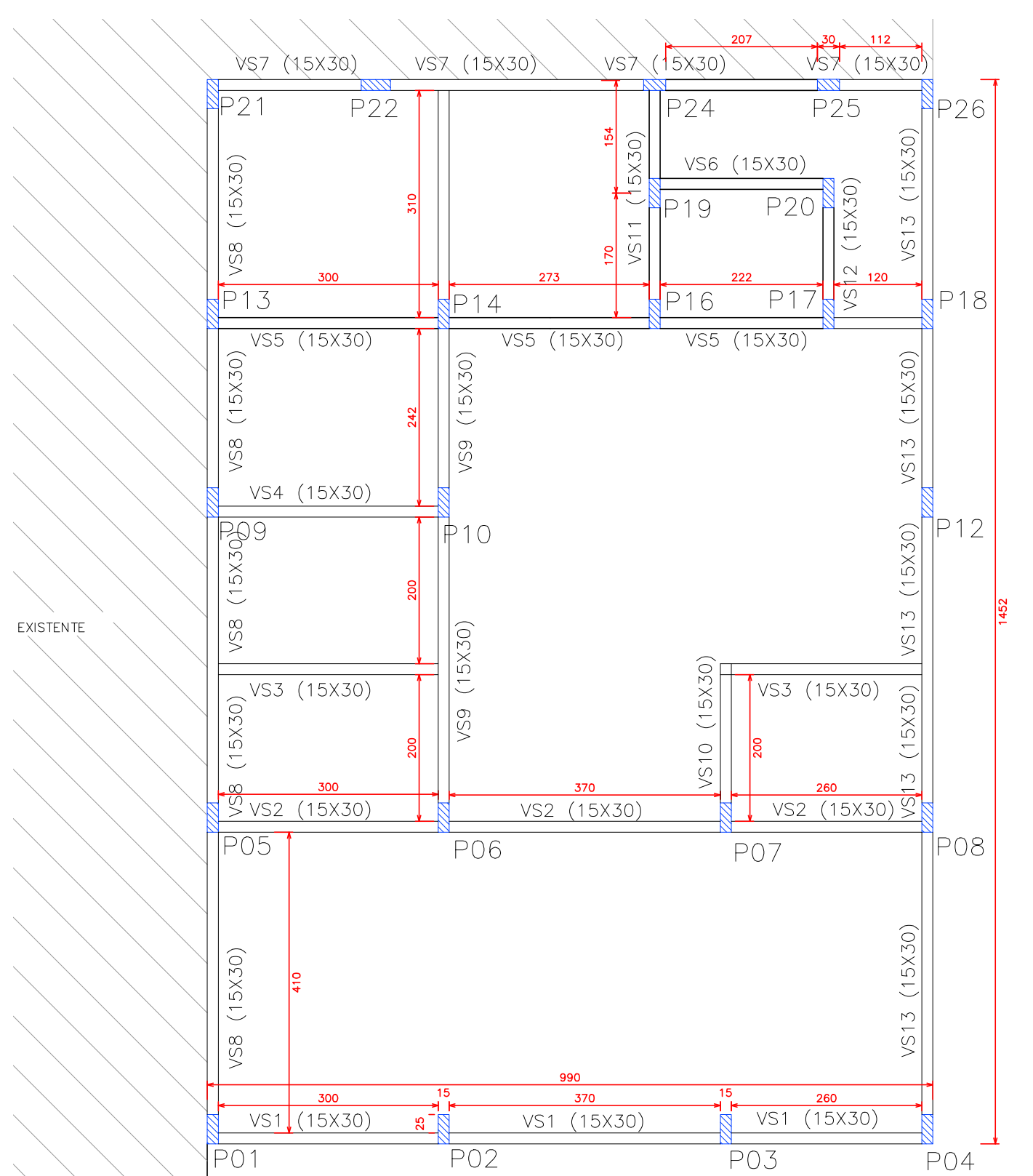


PLANTA DE LAJE
NÍVEL 457,6
Escala 1 / 75

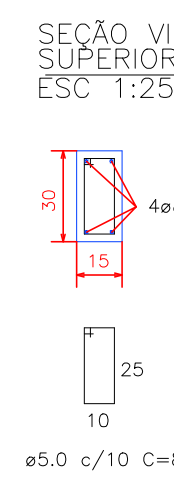


PLANTA FORMAS VIGA SUPERIOR
NÍVEL 737,6
Escala 1 / 75

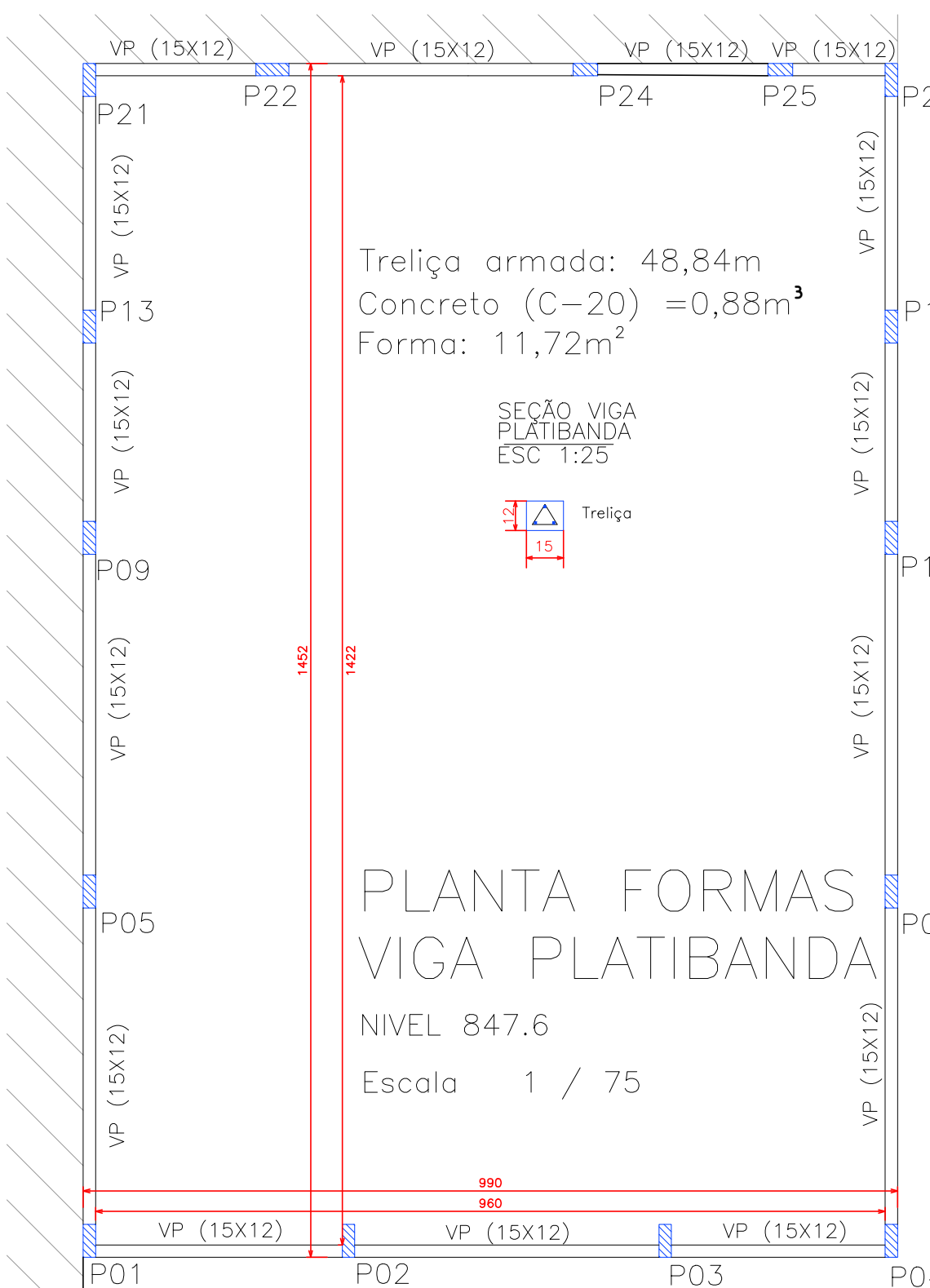
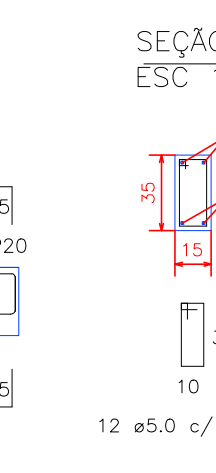
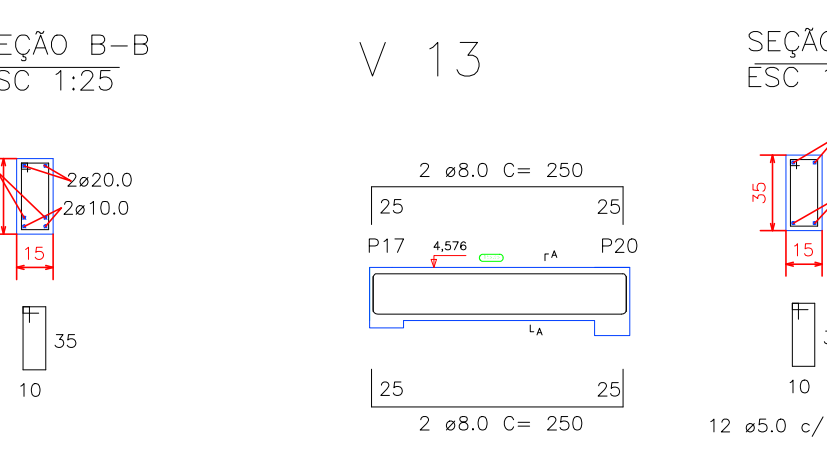
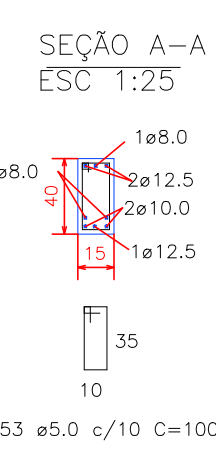
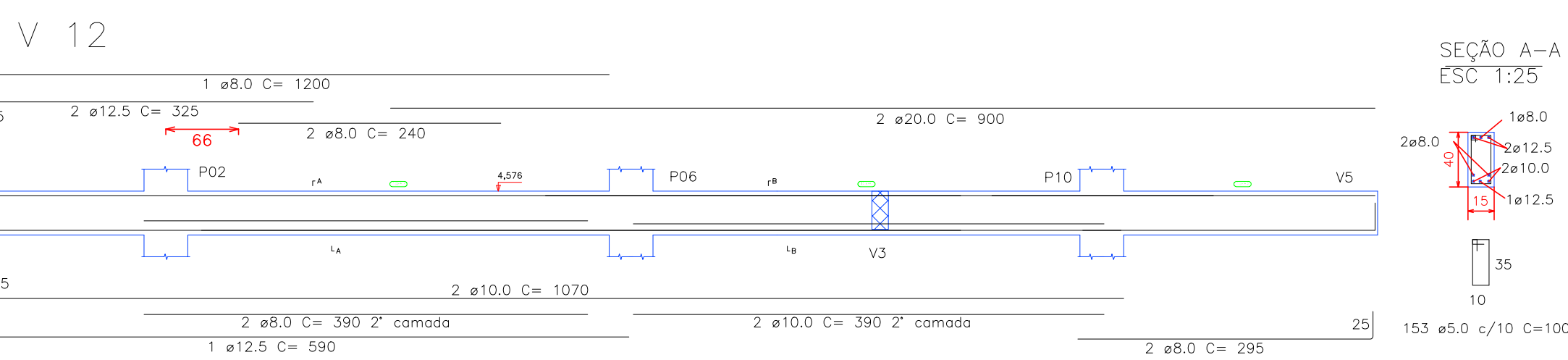
RESUMO DO AÇO DA VIGAS SUPERIOR

AÇO	DIAM	C.TOTAL (m)	PESO (kg)
CA50	8,0	385,12	152,12
CA60	5,0	770,40	118,64
PESO TOTAL			
CA50		152,12	
CA60		118,64	

Concreto (C-20) = 4,33m³
Forma: 72,21m²



400.0
10
25
40.0 c/10 C=80



PLANTA FORMAS VIGA PLATIBANDA
NÍVEL 847,6
Escala 1 / 75

PREFEITURA MUNICIPAL

Administração 2017 / 2020

PROPOSTA	RESP. TÉCNICO	PROJETO
		02/05
OBJETO	EDIFICAÇÃO - CORPO DE BOMBEIROS DV	ESTRUTURAL
DESCRIÇÃO	DETALHES DE VIGAS PLANTA DE LAJE PLANTA FORMAS VIGA SUPERIOR PLANTA FORMAS VIGA PLATIBANDA	302,35 M²
LOCAL	RUA BENTO MUNHOZ DA ROCHA NETO, 135 ALTO DA COLINA	DEZEMBRO/2019
PROJETO	DOIS VIZINHOS - PARANÁ	INDICADA