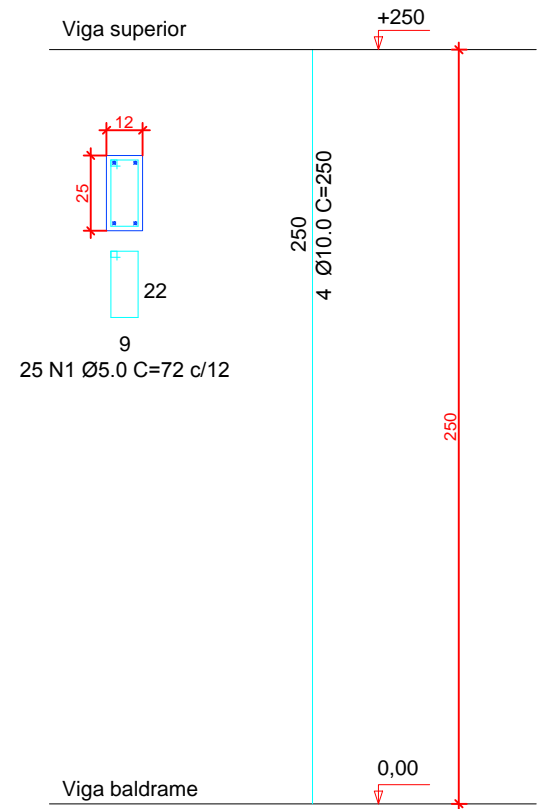
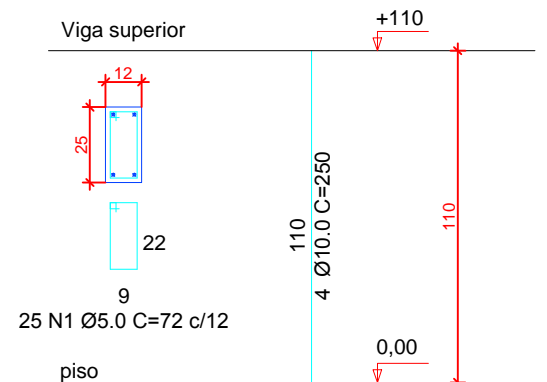


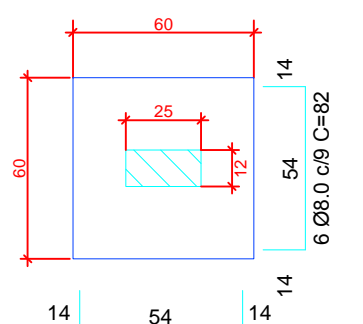
PILARES
P1-P2
Planta e corte
ESC 1:25



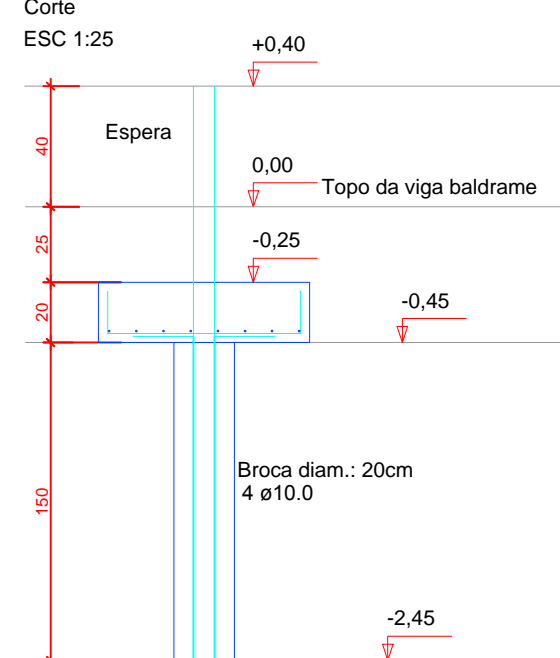
PILARES P3
Planta e corte
ESC 1:25



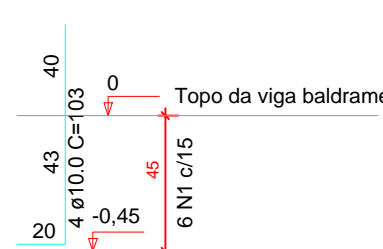
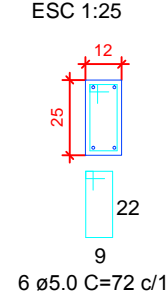
SAPATA
Planta
ESC 1:25



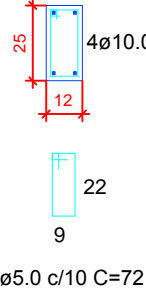
Corte
ESC 1:25



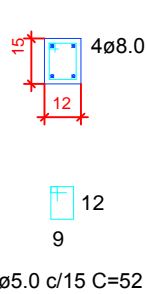
ESPERA
Planta e corte
ESC 1:25



VIGA BALDRAME
ESC 1:25



VIGA SUPERIOR
ESC 1:25



PREFEITURA MUNICIPAL

Administração 2017 / 2020

ADMINISTRAÇÃO		RESP. TÉCNICO	PRONÓIA	
OBRA		REFORMA BARRACÃO COMUNITARIO LINHA LAMBARI		02/02
ESPECIFICAÇÕES		- PLANTA ESTRUTURAL - DETALHAMENTO ESTRUTURAL		PROJETO
LOCAL		COMUNIDADE RURAL - LINHA LAMBARI		ÁREA TOTAL
MUNICÍPIO		DOIS VIZINHOS		240,00 m²
ESTADO		PARANÁ		DATA
ARQUIVO		SETEMBRO / 2020		LOTER
		INDICADA		QUADRA